

# HZ-175 HIGH EFFICIENCY

The HZ-175 is a full-sized industrial finishing machine known for its high efficiency and long barrels. At 48" long, it has the longest barrels of all the HZ-Series machines. By harnessing pressure and friction, this high-energy finishing machine efficiently removes excess material, polishes part surfaces, and creates a uniform finish. Unlike hand finishing, the HZ-175 achieves isotropic finishes, ensuring consistent and uniform polishing in all directions.



## Machine Specifications

• <b>Main Motor HP</b>	<b>15</b>
• <b>Voltage</b>	<b>230-460v</b>
• <b>Total Capacity</b>	<b>6 Cu. Ft.</b>
• <b>Shipping Weight</b>	<b>7000 lbs.</b>
• <b>Dimensions L x W x H</b>	<b>102" x 57" x 86"</b>
• <b>Barrel Dimensions</b>	<b>48" L x 8" D</b>
• <b>Max Part Size</b>	<b>47" L x 7" D</b>
• <b>Max RPM</b>	<b>150</b>

## Features & Benefits

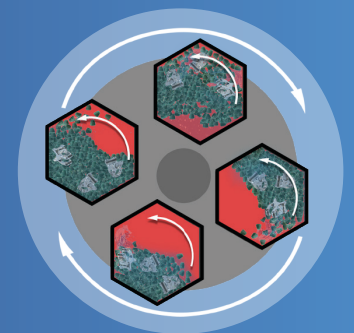
**Full-Size Production** – With barrels 48" wide and 8" in diameter, you can run more parts with less media when compared to our widest diameter HZ-Series models. This helps cut costs on media usage.

**Long Barrels:** At 48" long, these barrels are the longest in the HZ-Series of machines and are ideal for longer-than-average parts. Each barrel can also be divided into 21 small individual chambers.

**Auto Door** – Automatically open and close the machine door with the push of a button. The HZ-175 is one of two HZ-Series machines with this feature.

## How it Works

Centrifugal barrel finishing is a type of high-energy finishing that uses centrifugal force to subject parts and media to pressures greater than the force of gravity to efficiently finish parts. Our HZ-Series machines reach upwards of 12Gs. The process involves loading the four locking barrels with a mixture of parts, water, compound, and media. As the machine rotates, the barrels spin around the turret on their own axis, creating a sliding force inside the barrel.



# HZ-175 Barrels

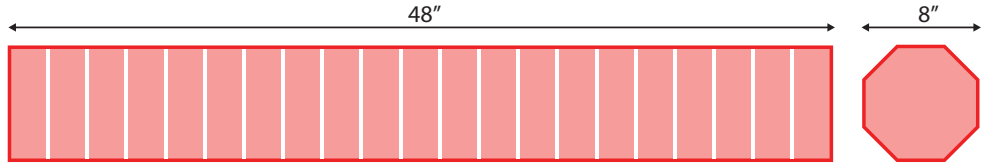
The HZ-175 features four 48" wide by 8" diameter barrels. The lids are not removed during operation. Each barrel has 5 hinges with springs along the back side of the cover to aid in opening the lid, simply unlatch the front locking mechanism and lift the lid to open each barrel.

With 20 divider slots in each barrel, you can create 21 individual chambers, if utilizing MFI's optional barrel dividers. This allows operators to separate parts into several different chambers within each barrel. This is a critical feature when part-on-part impingement needs to be avoided.



### Barrel Features:

- 5 hinges with springs per barrel
- 20 divider slots for barrel flexibility
- ½" thick replaceable polyurethane liner
- Locks for secure operation



### Free Sample Processing

Mass Finishing offers a free sample processing service to help customers determine the right machine for their operation. In our sample processing lab, we'll create a custom recipe and process tailored to your business and designed to produce the exact results you require.



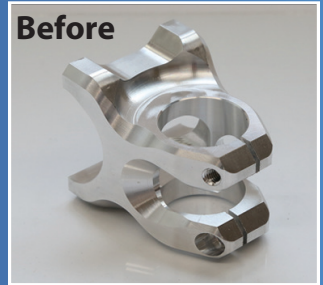
### Scan to Shop Media & Compounds

From media to compounds, MFI offers a wide range of consumable products to support your finishing operations.

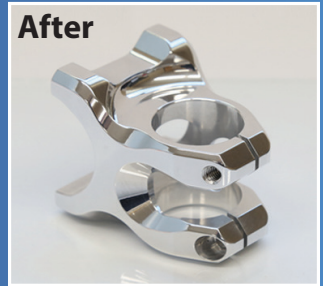


### Sample Parts

Before

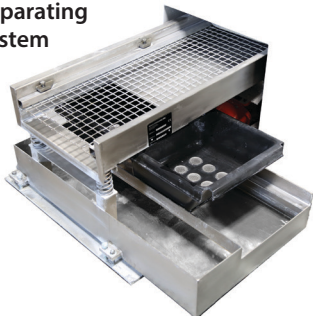


After



### Available Accessories

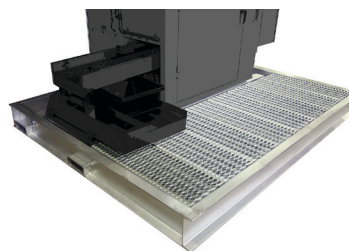
Media and Parts Separating System



PLC Control System



Drain Pan



Processing Table with Sludge Tank

